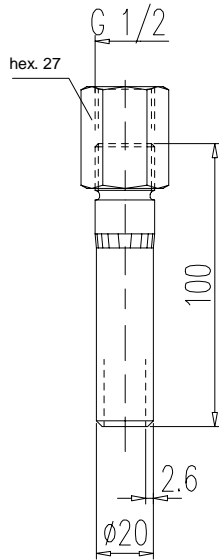
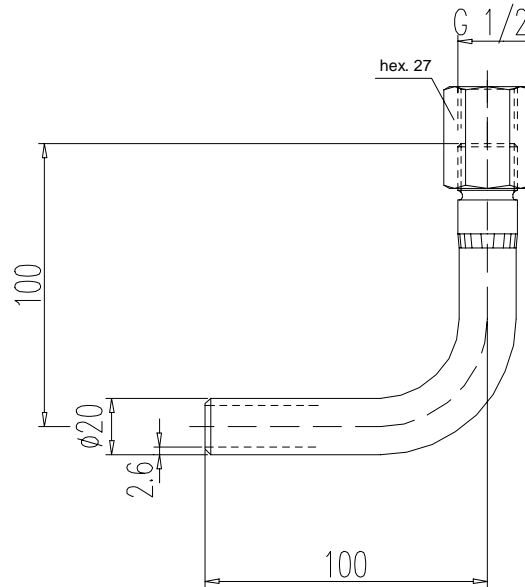
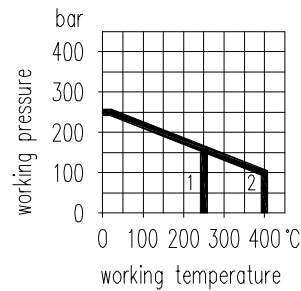


Straight pipe

Elbow 90°


- 1 steel type
2 stainless steel type



Connection thread d	Material	Part no.	
		Straight pipe	Elbow 90°
G 1/2	steel	S006.17.101.02	S006.17.100.02
	st. st.	S006.17.201.02	S006.17.200.02

Components	Steel	Stainless steel
	DIN - Material Number	
Tube 20 x 2,6 mm	1.0345	1.4571
Adjusting nut	acc. to DIN 16 283	

- Surface: steel phosphatized
- Range of application:
For liquids, gas or steam
- Other materials, pressure / temperature ratings and connections on request