

pressure transmitter with local readout, for homogenizer DS 4" (100mm)

MT OM

- ✓ - *Construction and finishing:* as per 74-05 SSI.
- ✓ - *Sterilization temperature:* +302°F (+150°C) max.
- ✓ - *Double elastic element:* Bourdon tube and electronic sensor.
- ✓ - *Vibrations and pulsations proof.*
- ✓ - *EMC immunity:* as per EN 61326.
- ✓ - *Calibration:* adjustable.
- ✓ - *Full traceability*



CE Compliance to requirements of directives:
EMC 2004/108/EC - PED 97/23/EC.



74-05

Authorization NO. 1599

Ranges: from 0...1500 to 0...20000 psi, relative
(from 0...100 to 0...1600 bar or equivalent units).
Accuracy (% VFS): local readout, ≤ 1.0 (≤ 1.6 for pressure
ranges > 8700 psi - 600 bar); transmitter, ≤ 0.5 .
Working pressure: 75% max of FSV.
Over pressure: not suitable.
Ambient temperature: 14...+149 °F (-10...+65 °C).
Process fluid temperature: 14...+248 °F (-10...+120 °C).

Output signals: for pressure ranges ≤ 8700 psi (600 bar) :
4...20 mA, 0...5 Vdc, 0...10 Vdc;
for pressure ranges > 8700 psi (600 bar) : 4...20 mA.
Sensor calibration : limit-point as per DIN 16086.
Zero calibration: ± 10 % span typical.
Span calibration: ± 10 % span typical.
Compensated temperature range: 14...+176 °F; (-10...+80 °C).
Thermal drift: ≤ 0.011 % span / °F ($\leq 0,02$ % span / °C).
Annual drift: $\leq 0,2$ % of span.
Supply and max load: see on page 2.

8.MOM.1 - Standard Model

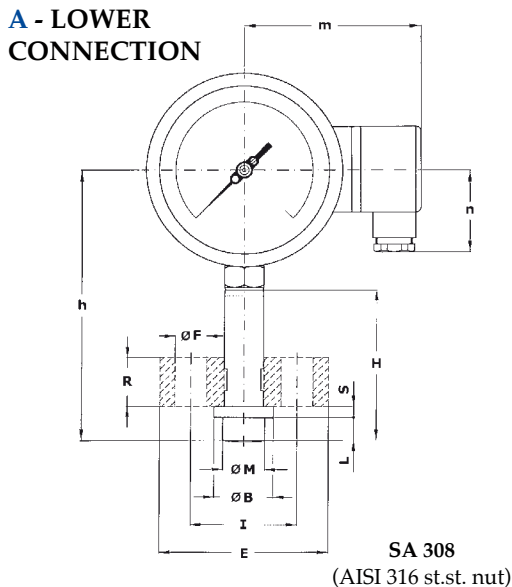
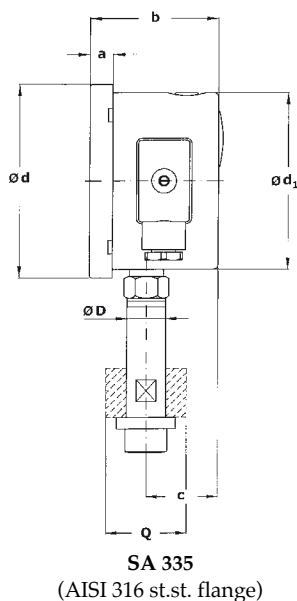
Designation code: S1 as per EN 837-2.
Electric connection: junction box as per VDE with exit
for cables $\varnothing 0.27...0.51$ " (7...13mm).
Sensor: ceramic thick film or stainless steel thin film.
Protection degree: IP 55 as per EN 60529/IEC 529.
Diaphragm: AISI 316L st.st.
Diaphragm seal: AISI 316L st.st.
Bourdon tube: AISI 316L st.st. seamless tube.
Ring: stainless steel, bayonet lock.
Window: tempered glass.
Movement: stainless steel.
Dial: aluminium, white with black markings.
Pointer: adjustable, aluminium, black.

8.MOM.3 - Filled Model

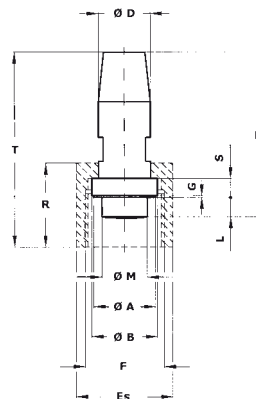
Filling liquid: dielectric oil.
Protection degree: IP 67 as per EN 60529/IEC 529.
Other features: as standard model.

pressure transmitter with local readout, for homogenizer, DS 4" (100mm)

MT OM



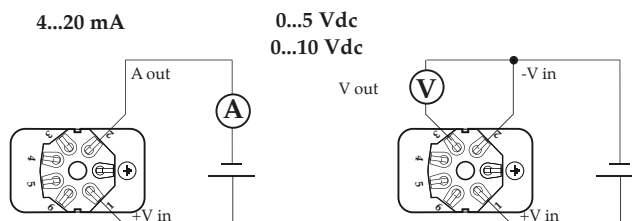
a	b	c	d	d ₁	h	m	n
0.51" (13)	2.84" (72,3)	1.59" (40,6)	4.35" (110,6)	3.97" (101)	6.08" (154,5)	3.66" (93,1)	1.85" (47)



Drawing	Ø D	Ø M	Ø A	Ø B	H	S	G	L	Es	E	Ø F	I	R	Q	T	Weight
335 SA 335	0.86" (22)	0.95" (23,5)		1.30" (33,3)	3.38" (86)	0.33" (8,5)		0.51" (13)		3.74" (95)	0.70" (18)	2.36" (60)	1.10" (28)	1.77" (45)		4.01 lbs (1,82 kg)
308 SA 308	1.06" (27)	0.95" (23,5)	1.25" (32)	1.33" (34)	3.38" (86)	0.39" (10)	0.04" (1)	0.39" (10)	1.96" (50)				1.73" (44)		1.77" (45)	3.37 lbs (1,53 kg)
167 SA 167	1.22" (31)	0.95" (23,5)	1.33" (34)	1.47" (37,5)	3.38" (86)	0.43" (11)	0.04" (1)	0.39" (10)								2.84 lbs (1,29 kg)
422 SA 422	1.22" (31)	1.02" (26)	1.33" (34)	1.47" (37,5)	3.38" (86)	0.43" (11)	0.04" (1)	0.39" (10)								2.86 lbs (1,30 kg)

dimensions : inches (mm)

Output signals	4...20 mA 1	0...5 Vdc 4	0...10 Vdc 5
Nr. of wires	2	3	3
Load (Ohm)	$R_L \leq (V_{in}-10)/0,02$	$R_L \geq 5 K\Omega$	$R_L \geq 10 K\Omega$
Supply: +V _{in}	10...30	8...30	14...30
Ground	(pls. refer to Installation Manual)		



OPTIONS

C01 - Calibration report
S38 - Process connection dwg. SA 308, without nut
S35 - Process connection dwg. SA 335, without flange
T31 - Plexiglas window

"HOW TO ORDER" SEQUENCE

Section / Model / Case / Mounting / Diameter / Range / Process connection / Output signal / Options
8 MOM 1 A E 335 1 C01
3 308 4 S38
167 5 S35
422 T31