

inert gas filled thermometers, local mounting

all stainless steel construction

DS 4", 6" (100-150 mm)

TG8



These instruments are designed for use in chemical and petrochemical processing industries, and in conventional power plants. They are built to resist the most severe operating conditions created by the ambient environment and the process medium. An TIG welded case/bulb and capillary strengthens the whole construction. A leak tight fit is ensured if the instrument is filled with a dampening fluid to prevent damage due to vibration.

6.TG8 - Standard Model

Designation: EN 13190.

Indication ranges: -320...+1200 °F (-200...+600 °C).

Measuring ranges: -280...+1100 °F (-170...+500 °C).

Accuracy class: 1 as per EN 13190, measuring range.

Overtemperature limit: 25% of full scale range for temperature ≤ 750 °F (400 °C); max 1100 °F (600 °C).

Ambient temperature: -13...+149 °F (-25...+65 °C).

Max working pressure: 360 psi - 25 bar (without thermowell).

Protection degree: IP 55 as per IEC 529.

Process connection: AISI 316 st.st.

AISI 316 st.st. bulb: with rigid extension ø 0.31" (8 mm):

S22 - ø 0.31" (8 mm) = 5.63"...393,7" (143...10000 mm);

S21 - ø 0.38" (9,6 mm) = 4.41"...393,7" (112...10000 mm);

S20 - ø 0.45" (11,5 mm) = 3.35"...393,7" (85...10000 mm);

with flexible extension ø 0.10" (2,5 mm):

S22 - ø 0.31" (8 mm) = 5.63"...393,7" (143...10000 mm);

S21 - ø 0.38" (9,6 mm) = 4.41"...393,7" (112...10000 mm);

S20 - ø 0.45" (11,5 mm) = 3.35"...393,7" (85...10000 mm);

Measuring element: inert gas filled expansion system.

Case: stainless steel.

Ring: stainless steel bayonet lock.

Window: tempered glass.

Movement: stainless steel.

Internal compensation device: by a bimetallic linkage.

Dial: aluminium, white with black markings.

Pointer: adjustable, aluminium, black.

OPTIONS

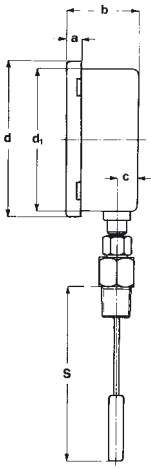
2G3 - ATEX version II 2G c	(1) (2)	Electric contacts	(3)
2D3 - ATEX version II 2GD c	(1) (2)	R10 - Glycerine filling, max +320 °F (+160 °C)	(2)
C40 - Case and ring AISI 316 st.st.		R11 - Silicone filling, max +482 °F (+250 °C)	(2)
E65 - Protection degree IP65	(2)	T01 - Tropicalization	
L22 - Maximum pointer IP 65 on plexiglas window	(2)	T32 - Safety glass window	(2)

(1) See the ATEX temperature gauges data-sheet for technical details.
 (2) Not available with electric contacts

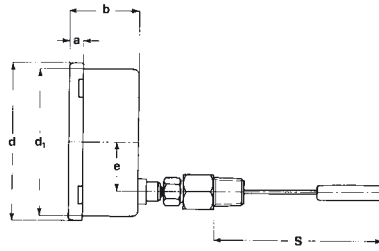
(3) Codes, description and wiring on data sheet MN14.



For use in potentially explosive atmospheres, instruments must be designed in conformity to ATEX 94/9/CE. This version is shown on separate data sheet available on request.



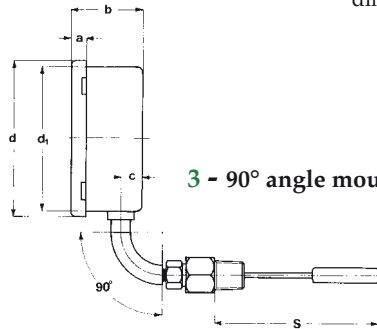
1 - Bottom mounting



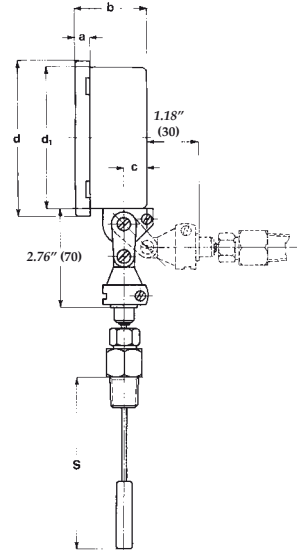
4 - Back mounting

DS	a	b	c	d	d ₁
E 4" (100)	0.57" (14,5)	1.99" (50,5)	0.61" (15,5)	4.41" (112)	3.98" (101)
G 6" (150)	0.65" (16,5)	2.11" (53,5)	0.61" (15,5)	6.54" (166)	5.91" (150)

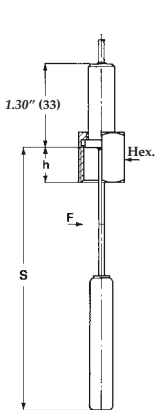
dimensions : inches (mm)



3 - 90° angle mounting

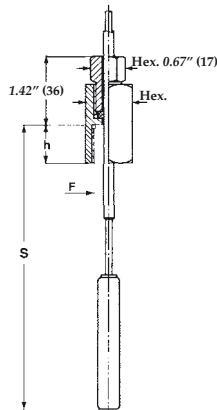


9 - Every angle mounting



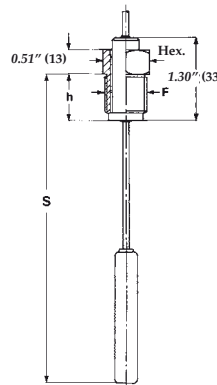
8 - Female swivel nut.

F	Hex.	h
41F	0.94" (24)	0.63" (16)
G 1/2 A		
51F	1.18" (30)	0.63" (16)
G 3/4 A		



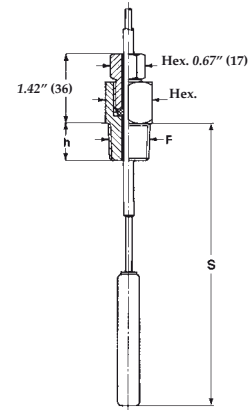
7 - Sliding female swivel nut.

F	Hex.	h
43F	0.94" (24)	0.71" (18)
1/2-14 NPT		
53F	1.18" (30)	0.71" (18)
3/4-14 NPT		



5 - Male swivel nut.

F	Hex.	h
41M	0.87" (22)	0.55" (14)
G 1/2 A		
51M	1.06" (27)	0.55" (14)
G 3/4 A		



9 - Sliding male swivel nut.

F	Hex.	h
41M	0.87" (22)	0.55" (14)
G 1/2 A		
43M	0.87" (22)	0.67" (17)
1/2-14 NPT		
51M	1.06" (27)	0.63" (16)
G 3/4 A		
53M	1.06" (27)	0.67" (17)
3/4-14 NPT		

dimensions : inches (mm)

"HOW TO ORDER" SEQUENCE

Section / Model / Mounting / Connection type / Diameter / Range / Process connection / Bulb / Options
6 **TG8** **1,3** **5,7** **E** **41M, 43M** **S20...22** **2G3...T32**
4,9 **8,9** **G** **51M, 53M** **S10...12**