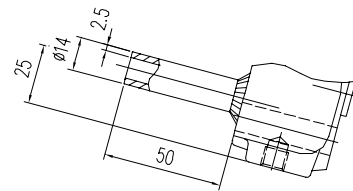


- 1 PTFE packing
- 2 graphite packing



MOUNTING ACCESSORIES see section 8

| PN | Material | Connections | | Part no. |
|-----|------------------|--|------------------------|----------------------------|
| | | Inlet / Purge | Outlet ³⁾ | |
| 420 | steel st. st. | tube fitting O. D. 12 mm, line S, G 3/8 | DIN EN 61518 Type A | S541.38.125 S541.38.225 |
| 420 | steel st. st. | weld ends for tube O. D. 14 x 2,5 mm | | S541.38.135 S541.38.235 |

| Components | Steel | Stainless steel ¹⁾ |
|--------------------|--|-------------------------------|
| | DIN - Material Number | |
| Body ²⁾ | 1.0460 | 1.4571 |
| Bonnet | 1.0501 | 1.4571 |
| Valve seat | 1.4571 | |
| Valve stem | 1.4104 | 1.4571 |
| Needle tip | 1.4122 ⁴⁾ | 1.4571 |
| Packing | PTFE up to 200°C (graphite up to 300°C) | |
| Union nut | steel | 1.4571 |

- Body: die-pressed part
- Surface: steel phosphatized
- Internal stem thread
- Replaceable valve seat
- Stem with cold rolled surface, back seat and non-rotating needle tip
- Special types are available
- Accessories: 1 socket wrench

- 1) Can also be supplied for oxygen service. Please notice order instruction B 3!
- 2) Available with inspection certificate 3.1 acc. to EN 10 204
- 3) Dimensions acc. to DIN EN 61518 see order instruction B 4
- 4) 1.4122 quenched and tempered